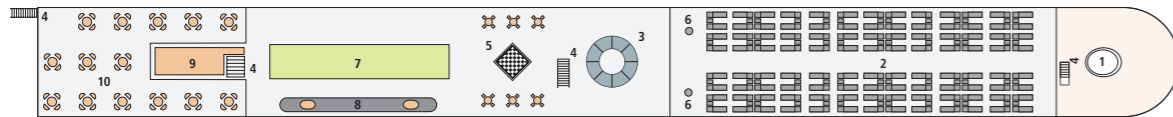


A-ROSA VIVA

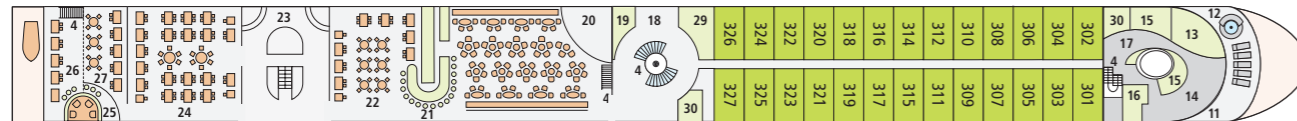
SHIPYARD: Neptun Werft GmbH, Warnemünde
PASSENGERS: max. 202
CABINS: 99 outside cabins
LENGTH/WIDTH: 135m/11.4m

SPEED: max. 22 km/h
POWER: 4 x 331 kW, a total of 1,800 PS
YEAR OF CONSTRUCTION: 2010
FLAG: Germany

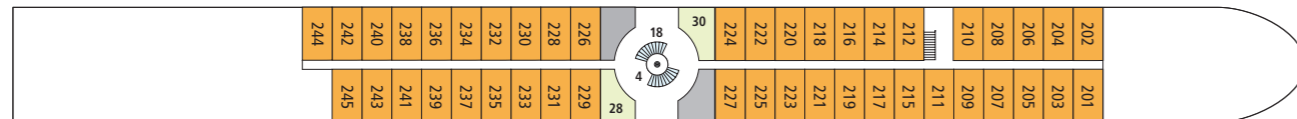
DECK 4 (SUN DECK)



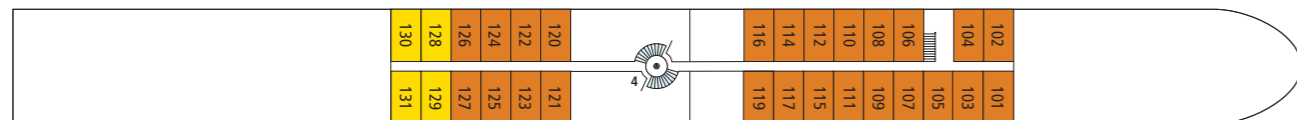
DECK 3



DECK 2

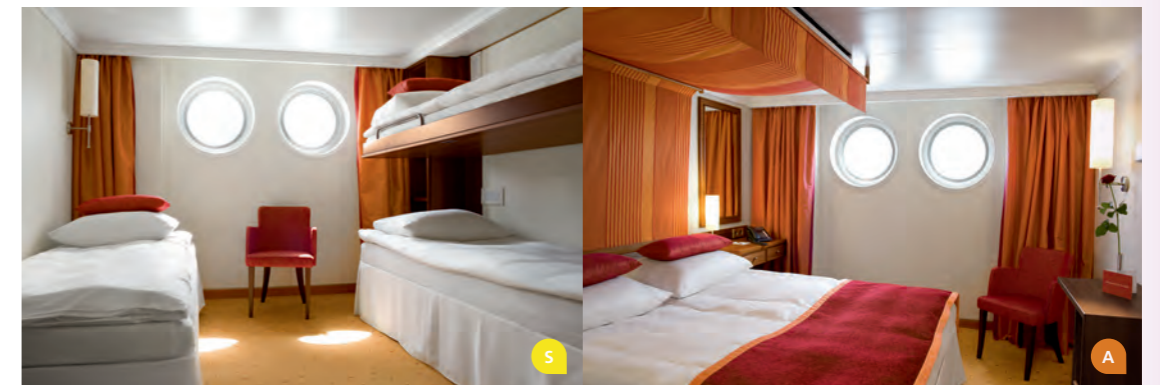


DECK 1



DECK PLAN

- | | | |
|---------------------------------|------------------------|----------------------------|
| 01 WHEELHOUSE | 11 SPA OUTDOOR AREA | 21 BAR |
| 02 RECLINERS AND AWNINGS | 12 WHIRLPOOL | 22 CAFÉ/RESTAURANT |
| 03 LIGHT DOME | 13 GYM | 23 BUFFET AND LIVE COOKING |
| 04 STAIRS | 14 SPA RELAXATION AREA | 24 MARKET RESTAURANT |
| 05 GIANT CHESS BOARD | 15 MASSAGE/BEAUTY | 25 BAR (INDOOR/OUTDOOR) |
| 06 SHOWER | 16 SANARIUM | 26 RESTAURANT OUTDOOR AREA |
| 07 PUTTING GREEN | 17 SPA RECEPTION | 27 WINE BAR |
| 08 SHUFFLEBOARD | 18 LOBBY | 28 RECEPTION |
| 09 MOBILE BAR AND GRILL STATION | 19 EXCURSION COUNTER | 29 ONBOARD SHOP |
| 10 OUTDOOR RESTAURANT | 20 LOUNGE | 30 TOILETS |



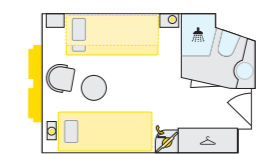
Windows can only be opened in 2-bed cabins in category C and D with a Juliette balcony.

THOSE IN NEED OF ASSISTANCE AND PEOPLE WITH LIMITED MOBILITY:

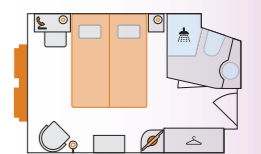
The decks of this ship are only accessible via stairs, which may mean there are some limitations. For a personal consultation, please call the *A-ROSA Service Center* at +49 (0)381 202 6001.

TIP FOR FAMILIES:

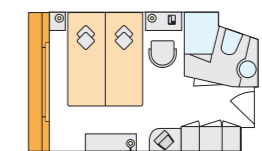
Each deck (cabin category A, C & D) has two cabins with a connecting door, which can be used as a family cabin. Cabin numbers are available on request (*A-ROSA Service Center*: +49 (0)381 202 6001).



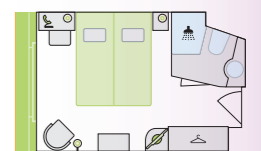
S 2-bed outside cabin with extra bed, 14.5m², deck 1



A 2-bed outside cabin, 14.5m², deck 1



C 2-bed outside cabin with Juliette balcony, 14.5m², deck 2



D 2-bed outside cabin with Juliette balcony, 14.5m², deck 3

WELCOME ON BOARD A-ROSA VIVA



ESCAPING EVERYDAY LIFE AT ITS BEST: ON BOARD A-ROSA

- Spacious sun deck with relaxed atmosphere
- Sufficient recliners, sunshades and awnings
- Whirlpool and SPA outdoor area
- Shuffleboard, putting green and giant chess board
- Beverage buffet on the sun deck
- P'tit bar with service on the aft deck
- Lounge with bar and dance floor
- Casual dress code



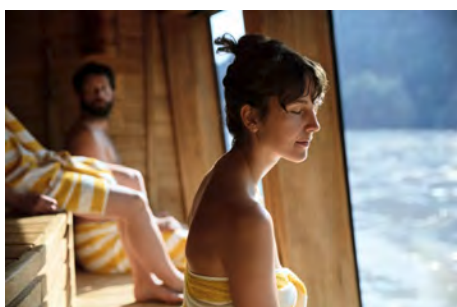
ENJOY YOURSELF AND LET YOUR PALATE EXPLORE NEW TASTES: CULINARY VARIETY

- Indulge all day, every day:
 - Daily varied gourmet buffets, plus the choice at dinner between a la carte and gourmet buffet dining
 - Freshly prepared regional and seasonal specialties
 - In the afternoon: cake buffet with coffee and tea
- High-quality drinks included throughout the day
- Flexible dining: free choice of tables in the market and café restaurant, outdoor restaurant and wine bar, dine whenever you like during restaurant opening hours, and no dress code
- Wine list adapted to the region
- BBQ buffet on the aft deck (depending on weather)



FEELING AT HOME WHILST ON HOLIDAY: THE CABINS

- Spacious, comfortable cabins, mainly with Juliette balcony
- Elegant design and high-quality materials provide a feel-good atmosphere
- Facilities: safe, air conditioning, TV, fly screen, hair dryer, shower / toilet, sauna towel, woolen blanket, telephone, bathrobe on request



TRULY RELAX WHILE ON HOLIDAY: SPA-ROSA

- Wide range of beauty and body treatments with high-quality BABOR products
- Professionally trained spa and beauty team
- Sanarium with panoramic view
- Gym with modern cardio equipment: Elliptical trainer and bicycle ergometer
- Massage showers and relaxation area
- Outdoor area with whirlpool, recliners and panoramic view



ARRIVAL AND DEPARTURE

- Cruises start and end in Paris
- By rail travel and TGV or Thalys
- By car
- By plane